



# Veitchi Interiors

Fit-out and refurbishment solutions, quality built in



**veitchi**  
interiors





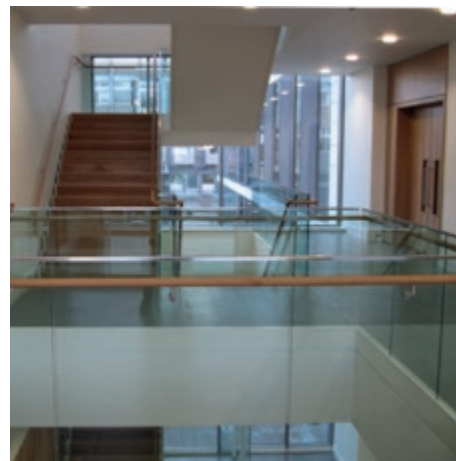
## Introduction

Veitchi Interiors are a specialist fit-out and refurbishment contractor operating within the UK. With the backing of the Veitchi Group we are able to offer a unique turnkey service to clients across a range of areas of construction.

We offer a wide range of services to our clients and have established a reputation for delivering a variety of projects from large scale multi trade fit-outs of Offices, Hotels, Hospitals, Schools, Colleges and Residential Flatted Developments to individual single trade work packages.

Working either independently or in partnership with our sister companies, we are able to offer our clients a tailored one-stop solution for their requirements.

We hold a range of accreditations which come with guarantees for the quality of workmanship and lifespan of the relevant products.



ST ANDREWS UNIVERSITY



HENDRICK'S GIN PALACE



BEATSON CANCER CARE CENTRE

## Office Fit-out and Refurbishment Specialists

Veitchi Interiors offer transformational, turnkey, multi-trade solutions to your fit-out requirements. With a proven track record of working in live environments whether we are fitting out existing or new space, you can rely on Veitchi Interiors. We specialise in the following sectors:

**01/** Education **02/** Commercial **03/** Hospitality & Leisure **04/** Health Care  
**05/** Residential **06/** Retail



**ABOVE IMAGES:** PULSANT OFFICES, NEWCASTLE / UNIVERSITY OF THE WEST OF SCOTLAND (UWS), BLANTYRE / AVONDALE HOUSE, BELLSHILL / ANDERSON HIGH SCHOOL & HALLS OF RESIDENCE, SHETLAND





With five specialist businesses in construction and interiors, the Veitchi Group offers a uniquely integrated range of services to contractors and property owners across the UK. Founded over a century ago, we've earned an enviable reputation among private and public sector clients as a one-stop shop for specialist solutions.



**veitchi**  
interiors

Part of the VeitchiGroup

## Contact Us

### **Veitchi Interiors Ltd**

8 Cambuslang Way,  
Gateway Glasgow, Glasgow,  
Cambuslang, G32 8ND

**T** 0141 647 9627

**E** interiors@veitchi.com

### **Veitchi Interiors Ltd**

Unit 4, Wellington Circle,  
Altens Aberdeen, AB12 3JG

**T** 01224 896 333

**E** aberdeen@veitchi.com

**www.veitchi.com**

**VeitchiValue** People • Pride • Prosperity